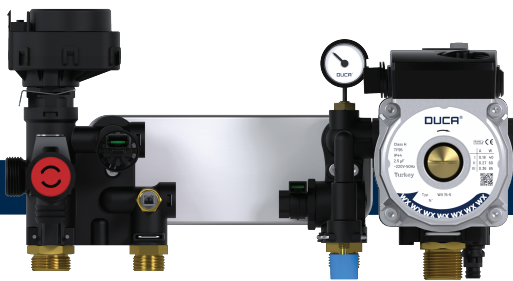
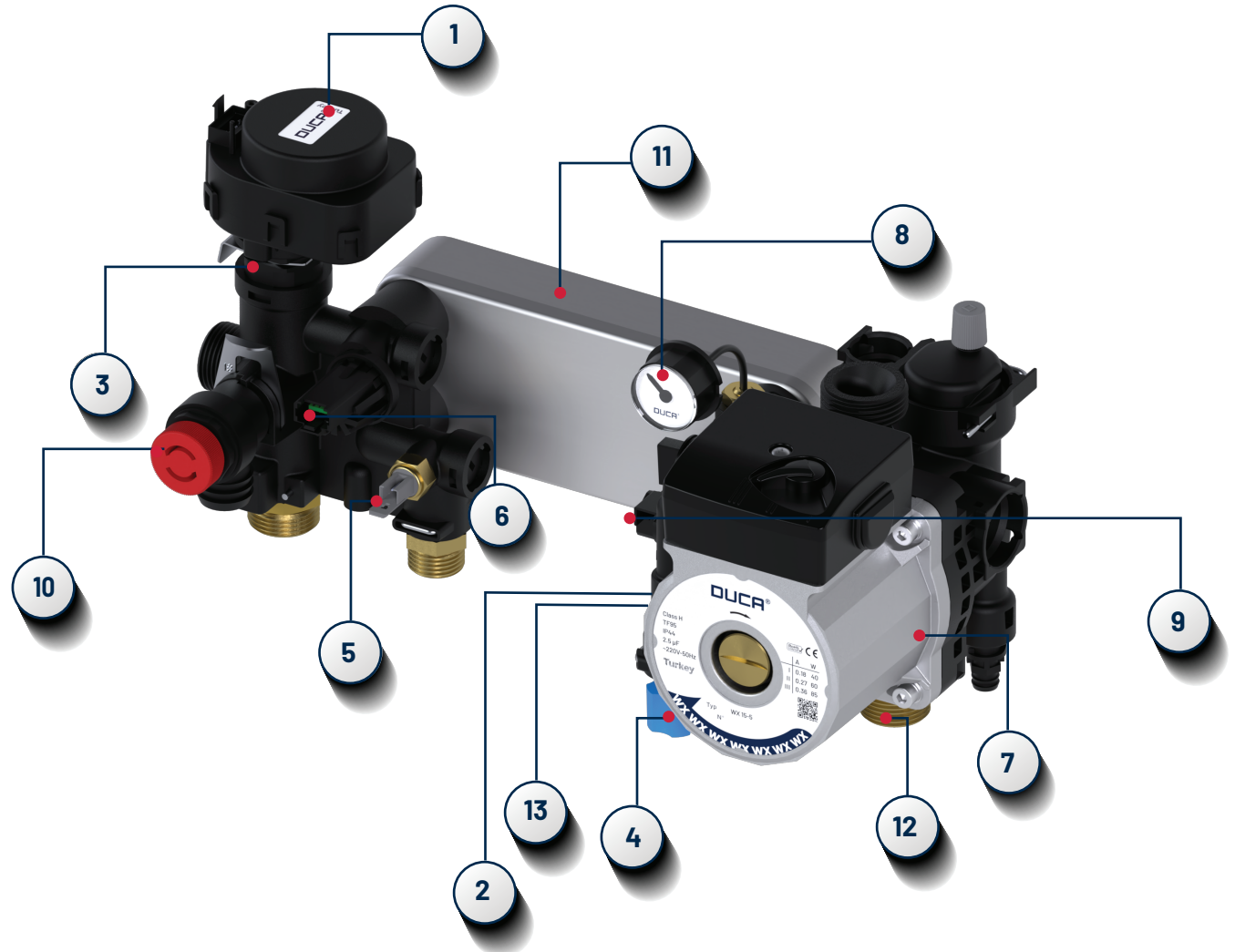


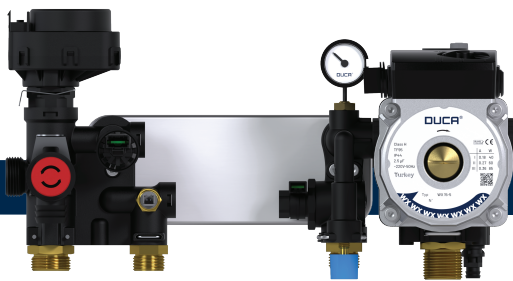
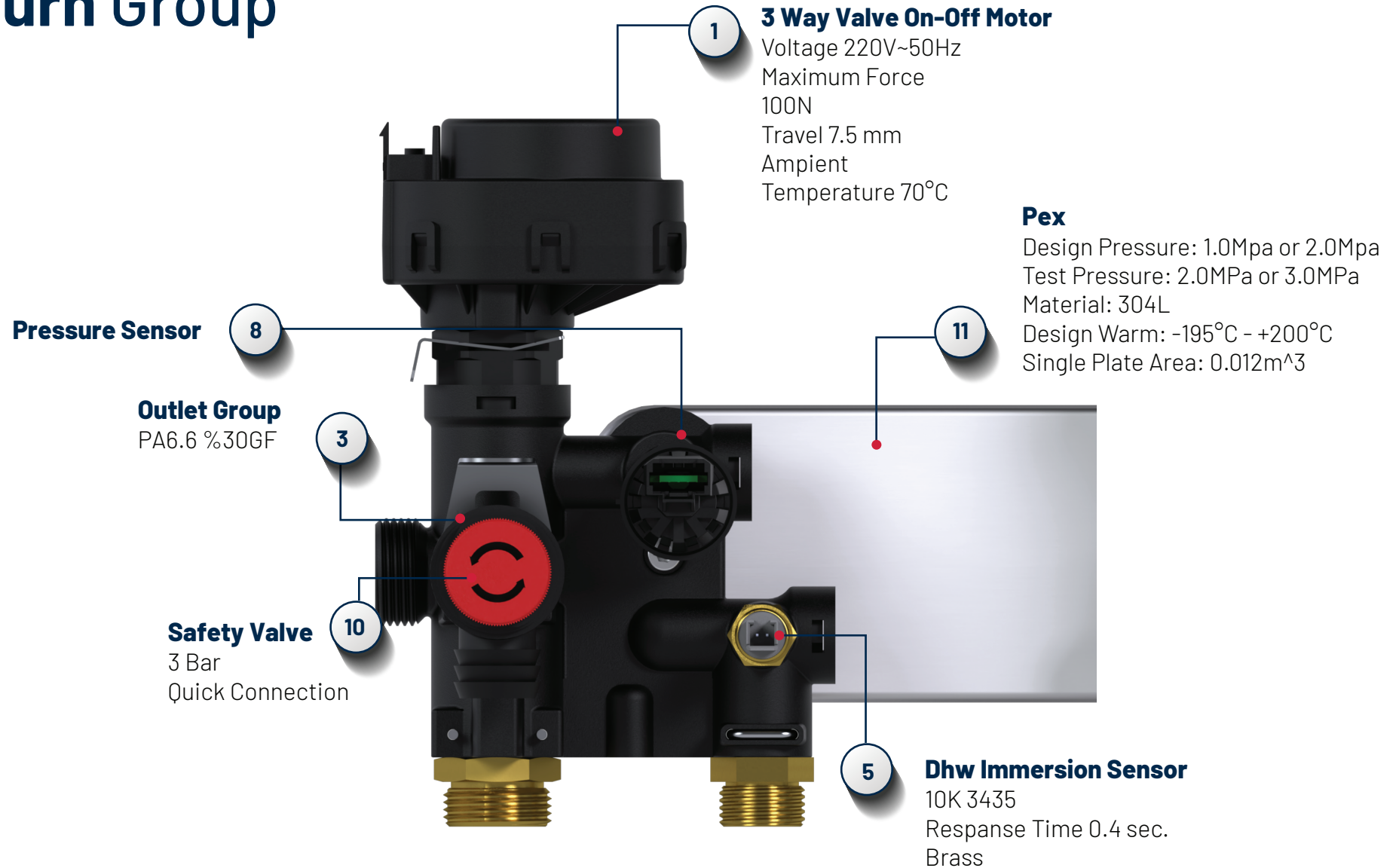


# DUCA OEM

- 1 3 Way Valve On-Off Motor
- 2 Flow Restrictor
- 3 Outlet Group
- 4 Filling Tap
- 5 Dhw Immersion Sensor
- 6 Pressure Sensor
- 7 Circulation Pump
- 8 Manometer
- 9 Inlet Group
- 10 Safety Valve
- 11 Pex
- 12 Nippel
- 13 Flow Control



# Return Group



# Inlet Group

|  |   |
|--|---|
| Medium:  | Heating water, water, air   |
| Measuring range:   | 0 ... 450 kPa / 4,5 bar / 65 psi  |
| Burst pressure :   | > 0,9 MPa / 9 bar / 130 psi   |
| Characteristic / Tolerance* at Vcc=5,00 V DC   |   |
| > Upper tolerance limit  | $U_{out} [V] = 0,58 [V/bar] \times \text{applied pressure [bar]} + 1,23 [V]$  |
| > Ideal characteristic   | $U_{out} [V] = 0,55 [V/bar] \times \text{applied pressure [bar]} + 1,125 [V]$ |
| > Lower tolerance limit  | $U_{out} [V] = 0,52 [V/bar] \times \text{applied pressure [bar]} + 1,02 [V]$  |
| The tolerance value includes a temperature influence of 0.01 % FS/K for the medium temperature |   |
| > Material housing   | Grivory (glass fibre reinforced)<br>EPDM + fabric reinforcement               |
| > Material membrane  | Certified for drinking-water /<br>KTW, W270, FDA on request                   |
| Medium temperatur (water)  | +2 °C...+90 °C (max. 120 °C for 10 minutes above lifetime)                    |
| Ambient temperature  | -10 °C +70 °C   |
| Storage temperature  | -40 °C ... +70 °C   |
| Supply voltage   | 5 V DC $\pm$ 0.25 V (ratiometric)   |
| Maximum power consumption  | < 14 mA (12 mA typ)   |
| Output signal (2066.2102)  | Proportional analog voltage   |
| at 0 bar/ at 4,5 bar   | > 1,125 V/ > 3,6 V  |
| Terminal   | Rast 2.5; 3-pole, 4-pole  |

