

TECHNICAL DATA SHEET

HEAT MASTER L



Application

Domestic hot water often requires draining cold water from pipes before hot water arrives, causing delays and resource waste. Our Intelligent Return Pump addresses this issue by providing immediate hot water upon tap activation, offering comfort and efficiency.

The system supports multiple operation modes including continuous intelligent temperature control, energy-saving mode, touch activation, remote control, and automatic water flow activation, enabling "zero cold water" convenience.

Suitable for gas, electric, solar, air-source water heaters, and wall-mounted furnaces, the pump effectively serves households with pipe lengths between 30m-150m and a minimum water flow of 6L/min.

For installations without dedicated return pipes, the pump connects between hot and cold water lines near the endpoint. For systems with return pipes, it connects between the hot water line and return pipe, typically near the water tank or pipeline endpoint.

Main features

- Immediate hot water supply ("zero cold water").
- Intelligent, energy-efficient constant temperature control.
- Versatile start methods (touch, remote control, water flow activation).
- Compatible with gas, electric, solar, air-energy heaters, and wall-mounted furnaces.
- Supports pipeline lengths 30-150 m with min. flow of 6L/min.
- Flexible installation (with or without return pipe).

Working condition

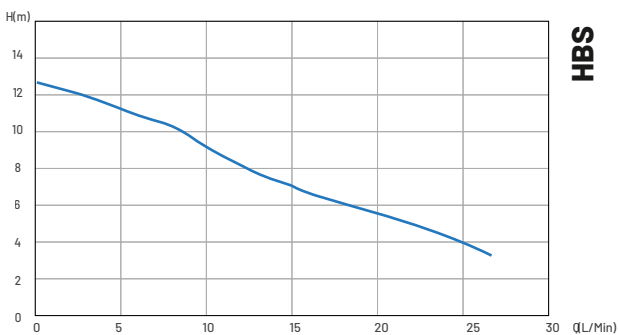
- Liquid temperature: 2°C~70°C
- Ambient temperature: -20°C~+40°C
- Max system pressure: 10bar
- Protection level: IP21
- Rated voltage/frequency: 230V(-10%~+6%), 50/60Hz
- Domestic water (non-drinking water), the pH value of the medium is between 6.5 and 8.5,
- the volume content of solid particles is not more than 0.1% of unit volume, and the particle size is not more than 0.2mm

HEAT MASTER L

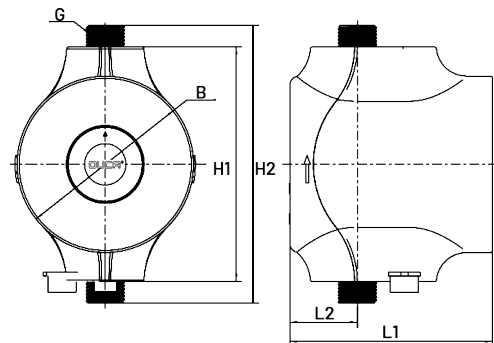


Max. Flow Rate **Max. Head**
 1,6 m³/h 12m

Performance Curve



Dimensions



H1 125 mm
H2 148 mm
B 94 mm

L1 108 mm
L2 36 mm
G 1½